

DISCOVERY DIVE CENTER

DISCOVER THE AMAZING UNDERWATER WORLD OF KOH SAMUI

“Either you decide to stay in the shallow end
of the pool or you go out in the ocean.”

-Christopher Reeve

DISCOVERY DIVE CENTER

Discovery Dive Center offers programs and tours that are led by highly experienced instructors for a safe, relaxing, and enjoyable dive. Their wealth of experience will ensure that divers and snorkelers fully experience the most exciting and exhilarating sites of Koh Samui and its neighboring islands, which are just as beautiful. They believe first and foremost in safety and customer service. All their scuba instructors are emergency first responders, and they provide their own oxygen and first aid kits aboard all of their boats. Their scuba diving equipment is also top-notch and renewed annually.

Discovery Dive Center's highly experienced team of multilingual PADI master instructors and dive instructors conduct all PADI activities to the very highest standards - above and beyond what is

required by PADI.

Location: Chaweng

Certified Divers:

2 Dive trip to Koh Tao - 5,220 THB

2 Dive trip to Sailrock - 5,080 THB

2 Dive trip to Chumporn Pinnacle - Koh tao - 5,540 THB

2 Dive trip to Anghong National Marine Park - 5,220 THB

Snorkeling - 2,950 THB

Cancellation policy:

Any cancellations within 24 hours prior to the start of the trip or course will result in no refund of any payments made.

Inclusions:

Round-trip hotel transfers via an air-conditioned minibus (a nominal fee applies if the hotel is on the West and South parts of the island), food and drinks, use of tanks, BCD, weights, mask, wetsuit, fins, and snorkel

****Please note that rates are subject to change at the time of booking.***



DIVE COURSES

Open Water Course

Price: 19,800 THB per person

Course Level: Beginner

3-day diving course certifies you to dive up to 18 meters worldwide. It includes online theory, pool training, and four open water dives.

Advanced Open Water

Price: 16,400 THB per person

Course Level: Advanced

The PADI Advanced Open Water course takes 2 days and includes 5 adventure dives. You'll complete a Deep dive and a Navigation dive, plus 3 elective dives based on availability.

Scuba Diving

Price: 13,800 THB per person

Course Level: Beginner

2-day course covers basic dive theory and includes two open water training dives. Upon completion, you'll be certified to dive up to 12 meters under supervision.

Specialty Scuba Diving Courses

Price: Request for pricing

Course Level: Advanced

Offers a range of PADI specialty courses in Thailand, featuring 2-4 open water dives to enhance your skills. Each course also counts toward achieving the prestigious PADI Master Scuba Diver rating.

Discover Scuba Diving

Price: 6,220 THB per person

Course Level: Beginner

One-day PADI program lets you experience scuba diving up to 12 meters. While it doesn't provide certification, it counts as your first open water dive toward PADI certification.

Divemaster Course

Price: Request for pricing

Course Level: Professional

This is your first professional diving certification, a challenging yet rewarding course lasting 4-12 weeks. Upon completion, you'll be certified to lead dives and conduct select PADI programs.

Rescue Diver

Price: 18,400 THB per person

Course Level: Advanced

Over 2-3 days, you'll learn essential skills to handle emergencies and assist other divers. It boosts confidence and makes you a better, more prepared scuba diver.

ITINERARIES

Sail Rock

Hotel or resort pick-up at 7 am. Enjoy a light breakfast and coffee or tea at the pier as you meet your instructor for the day.

Leave the pier by 8 am, and ride about 50 minutes to Sail Rock. You will do two dives at Sail Rock, where you will also be served some fruits in between the two dives.

Enjoy a sumptuous lunch on the paradisiacal beach of Koh Phangan. You will take about an hour's rest before you head back to the pier.

Return to hotel or resort by 1:45 pm

Koh Tao

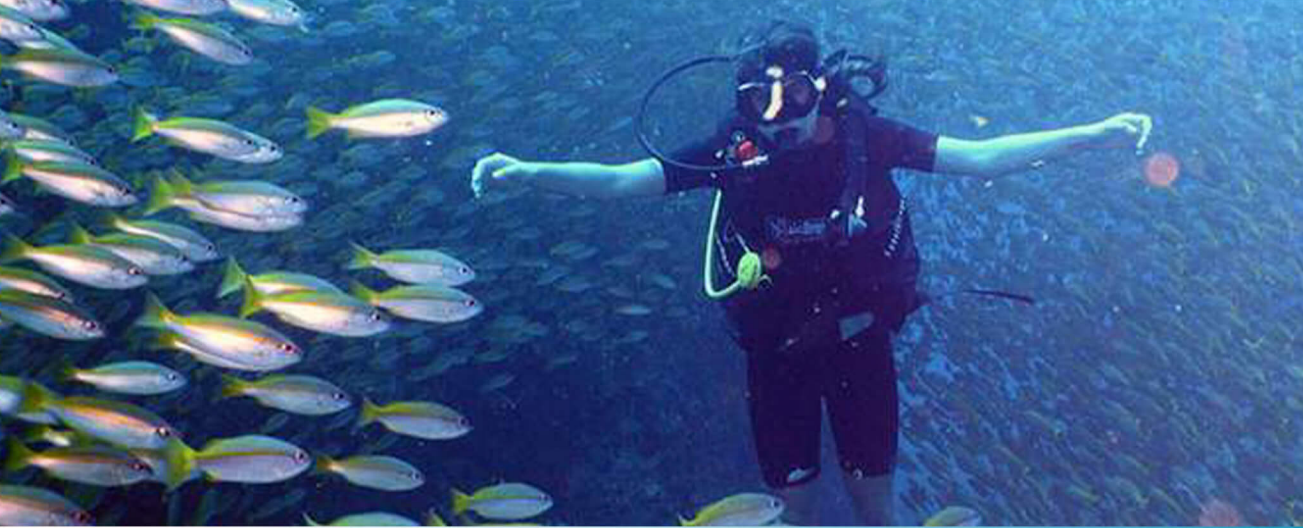
Hotel or resort pick-up at 7 am. Enjoy a light breakfast and coffee or tea at the pier as you meet your instructor for the day.

Leave the pier by 8 am, ride about 1 hour and 15 minutes to your first dive site in Koh Tao

Enjoy lunch after your first dive, either aboard the boat or on the beach. Take about an hour's rest before your next dive.

Head to another Koh Tao site for your second dive. Afterwards, head back to the pier.

Return to hotel or resort around 3:30 pm



ITINERARIES

Chumphon

Hotel or resort pick-up at 7 am. Enjoy a light breakfast and coffee or tea at the pier as you meet your instructor for the day.

Leave the pier by 8 am, and ride about 1 hour and 20 minutes to Chumphon Pinnacle. After your first dive at Chumphon Pinnacle, you will be served lunch either aboard the boat or on the beach. Take about an hour's rest before your next dive.

Head to another Koh Tao site for your second dive. Afterwards, head back to the pier.

Return to hotel or resort around 3:40 pm

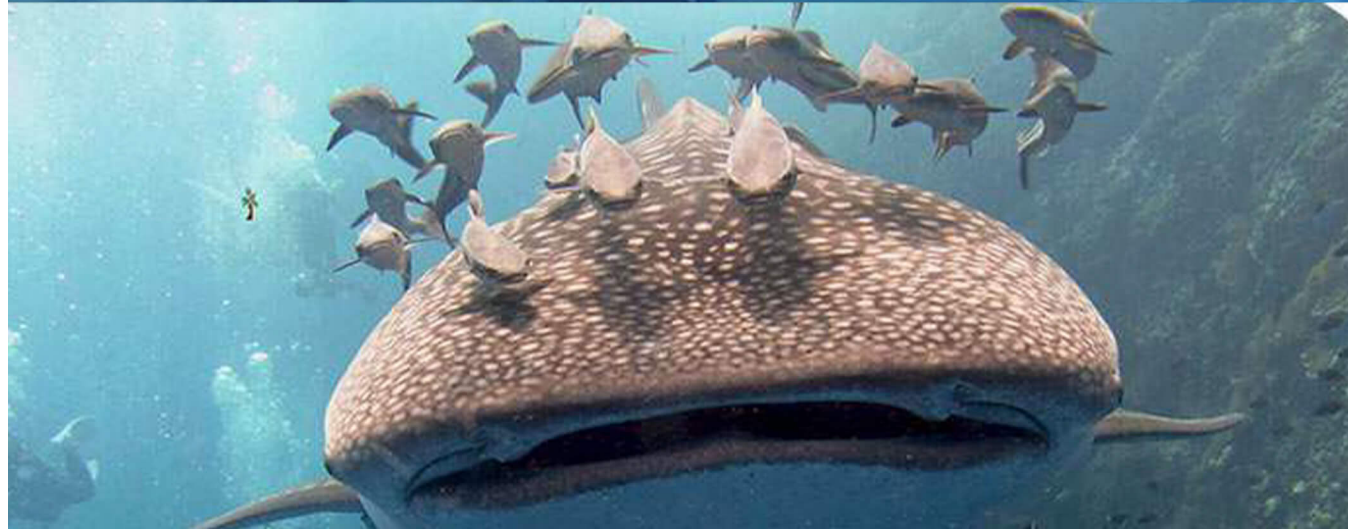
Discover Scuba Diving Program

Hotel or resort pick-up at 7 am. Enjoy a light breakfast and coffee or tea at the pier as you meet your instructor for the day.

Leave the pier by 8 am, and ride about 1 hour and 15 minutes to one of the shallow bays of Koh Tao. Upon arrival, you will start in very shallow waters, where the instructor will go over some basic scuba diving skills.

After the first dive, you will be served lunch on the boat or by the beach. Take about an hour's rest before heading to another Koh Tao site.

For your second dive, you will already find it easy to scuba dive, and you can already explore on your own. After the second dive, the boat will return to Koh Samui. Return to the hotel or resort around 3:30 pm.





T H E L U X U R Y
S I G N A T U R E